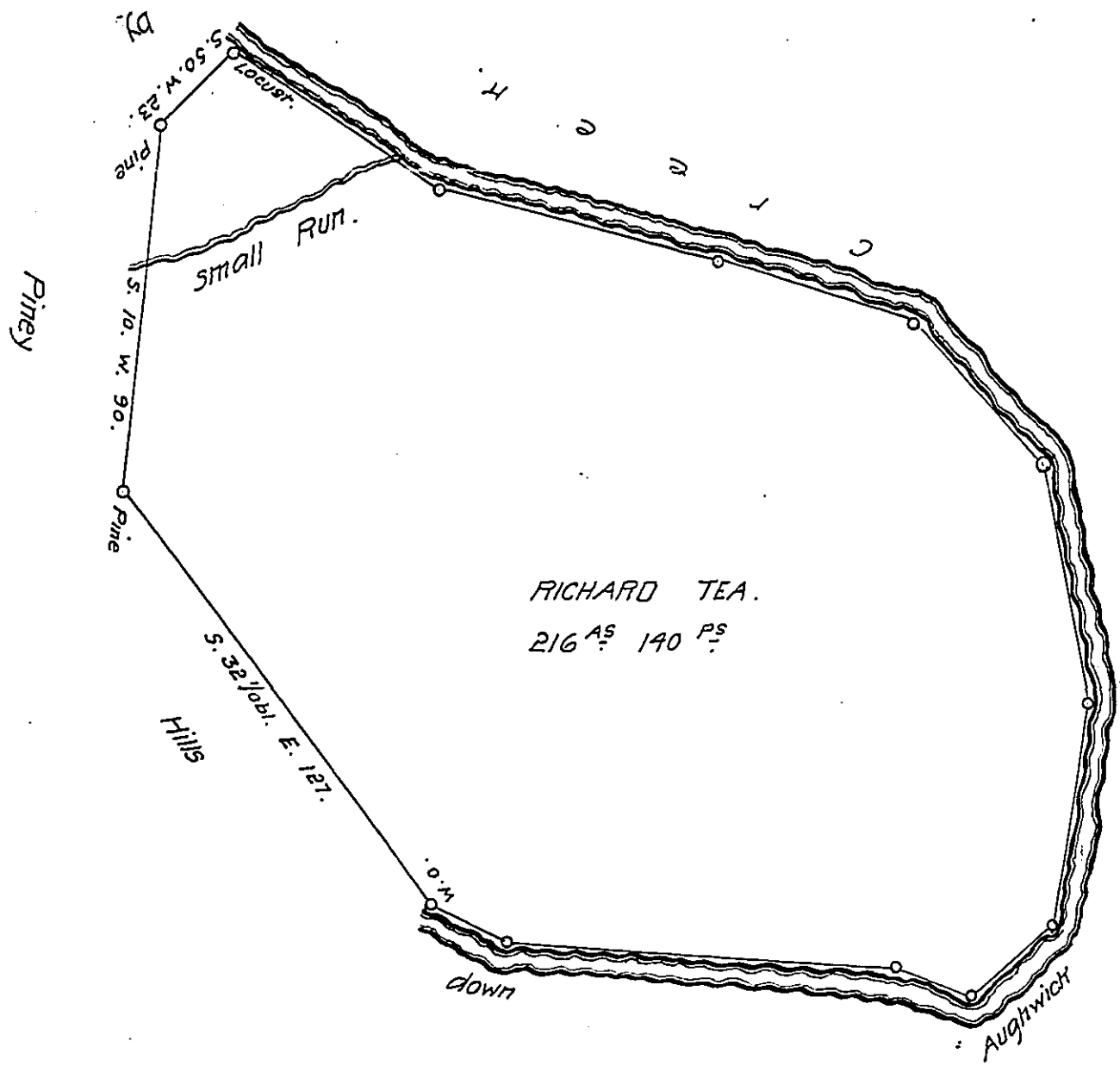


FORM NO 1.



Situate on Aughwick Creek in Shirley Township Huntingdon County Containing 216^{AS} 140^{PS}
 and the Usual Allowance for Roads Surveyed the first day of March 1792 in pursuance
 of an Order No 330 (obj)ted the first day of August 1766.

John Ganon. D.S.

To Daniel Brodhead Esquire S.G.

Note a Survey was made of the above Signed Richard Tea when he had the District the
 Draught and feild Notes of which I have examined and find to be Accurate.

Courses & distances Down Aughwick Creek from the wo. to the Locust.

- S. 61. E. 22.
- S. 82. E. 100.
- S. 65. E. 22
- N. 52. E. 26.
- N. 14. E. 54.
- N. 6. W. 60.
- N. 41. W. 50.
- N. 68. W. 52.
- N. 73. W. 73
- N. 53. W. 62 Locust

IN TESTIMONY that the above is a copy of the original remaining on file in
 the Department of Internal Affairs of Pennsylvania, made
 conformably to an Act of Assembly approved the 16th day of
 February, 1833, I have hereunto set my Hand and caused
 the Seal of said Department to be affixed at Harrisburg,
 this third day of June 1908.

Henry Houck

Secretary of Internal Affairs.